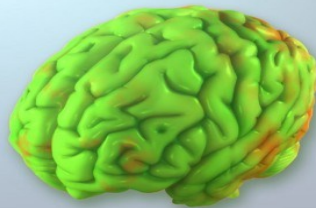


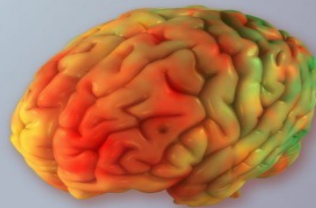
Have questions about the Program?



High level of Activity



Healthy Brain



Schizophrenic Brain

Low level of Activity

As a psychiatrically and medically based program, structured as an “Intensive Step-Down”, our mission is to provide individuals primarily with psychiatric conditions a treatment environment tailored to their needs; while ensuring them a home for their recovery with the proper clinical components, such as strong peer support, coping skills and insight into their illness.

In addition, it is our commitment to providing them the proper care and needed skills to live a meaningful life, so that can they re-enter the community, but also promoting the concept of recovery and teaching them the value of being treated with dignity and respect...



www.seamar.org



fb.com/seamarchc



@seamarchc



@seamarchc

Sea Mar
Community Health Centers
Clínica de la Comunidad
Exceptional service. Every person. Every time.



Sea Mar Psychiatric Center “GeroPsych” Behavioral Health Department

This program is located at the following Sea Mar location:

Sea Mar Psychiatric Center Location
1040 S Henderson St
Seattle, WA 98108
Tel: 206-788-3380 Fax: 206-788-3393
Administrator: Steve Sterling, MS, MHP

Serving our communities in King County

What is Sea Mar Psychiatric Center?

⇒ Sea Mar Community Health Centers' Psychiatric Center originated from the organizations' commitment to creating a residential facility for chronically, mentally ill patients that would not resemble an institution, but on the contrary, becomes a client's Home for Recovery. Sea Mar Psychiatric Center is an Intensive Care step-down facility from Western state, local hospitals, or other Geropsychiatric facilities. Our 16-bed facility includes a beautiful garden, spacious rooms, and therapeutic areas that promote recovery throughout the center. This center reflects our organizational value of treating our patients with dignity and respect.

Core Services

The Psychiatric Center currently serves both male and female patients who are 50 + years of age. The program will provide evaluation and treatment services for clients in a less restrictive manner, including SUD assessment. Our services are only offered to patients who are either court-mandated or voluntary patients; we do not offer services for clients in need of an involuntary commitment.

Sea Mar Psychiatric Center's Measurable Objectives:

- » To decrease admissions to Western State Hospital for geriatric patients living with dementia
- » To reduce the length of stay for geriatric patients involuntary treatment
- » To increase family involvement in patient care and discharge planning
- » To increase connection for outpatient services and coordinated care following discharge
- » To decrease overall readmission rates for geriatric inpatient clients
- » To decrease wait times for admission and reduction in the use of single bed certification

Admissions Criteria

- Patients will receive treatment for up to six-months/180 days within our Intensive Step-Down Psychiatric program.
- Patients must be 50 years old or older, suffering from mental health conditions that are affecting their functioning level. Although we prioritize patients of 50 years or older, we will consider patients between the ages of 40 – 49 years old.
- Patients in need of a structured environment for mental health conditions such as, Schizophrenia, Schizoaffective Disorder, Psychosis, and other psychotic disorders, including co-occurring disorders that are creating behavioral issues.
- Patients with a mild memory disorder diagnosis, including patients with mild dementia, or some medical conditions, such as diabetes, high blood pressure, and some mobility issues.
- Patients with no history of violence or physical harm to others in the last 60 days.
- Patients who can conduct their ADL's independently; assistance with bathing, eating, finances, grooming, and medication will be available on a case-by-case basis.

Our facility is able to manage comorbidities, but also medications for patients that are both stable and unstable medically. Example of these conditions are as follows below –

✦ **Cardiovascular**

Coronary Artery Disease, Chronic CHF (stable), Hypertension, Atrial Fibrillation (on controlled rate), Peripheral Arterial Disease

✦ **Endocrine**

Diabetes, Hypothyroidism, Dyslipidemia

✦ **Renal**

Chronic Kidney Disease (up to stage 3 and stable)

✦ **Pulmonary**

Asthma, COPD, Emphysema (Controlled)

✦ **Gastrointestinal**

GERD, Peptic Ulcer Disease

✦ **Genitourinary**

Benign Prostate Disease

✦ **Nutrition**

Obesity / Weight Control

✦ **Musculoskeletal**

Osteoporosis, Osteoarthritis, Fibromyalgia, Deep Vein Thrombosis (stable)

+ **Neurological**

Parkinson (who can walk with Front wheel walker and stable), s/p CVA with hemiparesis (who can walk with a walker, can feed self and has no swallowing problem)